



LUCKY HERP

CLOSER TO THE
NATURAL ENVIRONMENT

WELCOME
YOUR JOIN

CONTENTS

Featured supplier in pet supplies

01 ABOUT US

03 T5 TERRARIUM LAMP

UVB 5.0-(Diameter-16mm)

UVB 10.0-(Diameter-16mm)

05 T8 TERRARIUM LAMP

UVB 5.0-(Diameter-25.4mm)

UVB 10.0-(Diameter-25.4mm)

UVB 15.0-(Diameter-25.4mm)

09 COMPACT FLUORESCENT LAMP

13W - (Tube Diameter 10mm)

23W - (Tube Diameter 12mm)

26W - (Tube Diameter 10mm)

5W - (Tube Diameter 7mm)

15W - (Tube Diameter 12mm)

9W - (Tube Diameter 7mm)

12 BIRD LAMP

3U Bird Lamp

Spiral Bird Lamp



13 HEATING LAMP

New upgrade solar basking lamp(2nd Gen,Shatterproof)

New upgrade infrared lamp(2nd Gen,Burst-proof)

Solar Basking Lamp

R45 Mini Solar Basking lamp

Intense Solar Basking Spot Lamp

Neodymium Daylight Lamp

Solar Basking Infrared

Ceramic Heating Lamp

Solar Basking Night

Halogen Heating Lamp

20 REPTILE FULL SPECTRUM SOLAR LAMP

R80 80W

R115 160W

R95 80W

Par 38 100W

R115 125W

Par 38 160W

23 LIGHTING FIXTURE

Ho T5 Uv-B Lighting Fixture

Reflecting Dome

New 2nd Gen Uv-B Ho T5 Mini Fixture

Dual Dome

Ho T8 Uv-B Lighting Fixture

Ceramic Lamp Holder

Lamp Stand

Reflecting Dome With Thermostat

27 NEW PRODUCT

LED UVB

Thermostat

UV Sensor

28 HEATING PAD

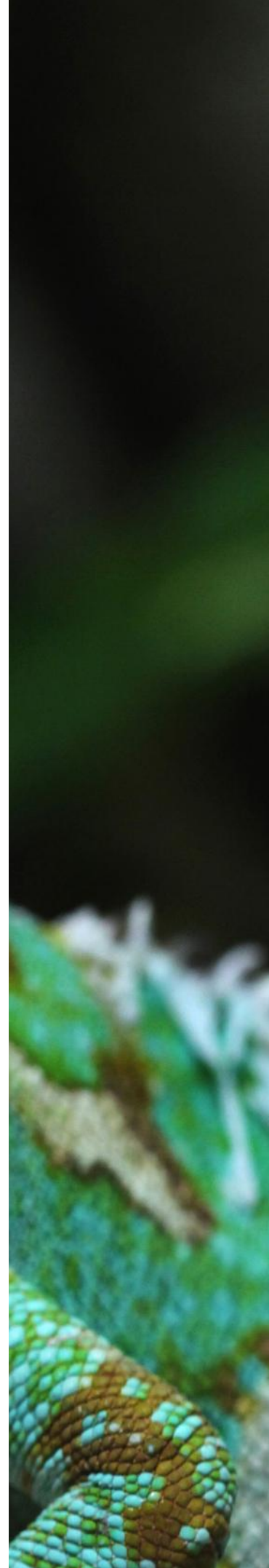
PVC Heating Pad

PET Heating Pad

30 INFRARED HEATING LAMP

Infrared Heating Lamp

Infrared Physical Therapy Lamp



ABOUT JINXU

Company profile

BFR2005

Traditional lighting
manufacturing enterprise

2005

Developed the first Reptile
UVB mercury lamp

2008

UVB energy-saving lamps
started to be developed

2015

Established "Changzhou Jinxu
Special Lighting Technology Co., Ltd."

2016

Established "LUCKY HERP"

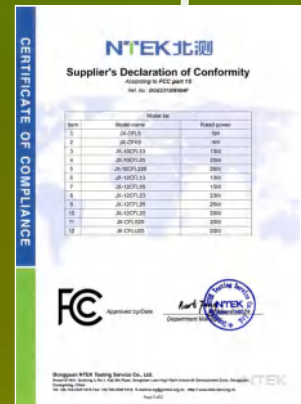
Changzhou Jinxu Special Lighting Technology Co., Ltd. is a comprehensive industry and trade company dedicated to the research and manufacture of reptile lighting and accessories to make an environment closer to nature for reptiles.

The company is located in Changzhou city, Jiangsu province, covers an area of more than 10,000 square meters, and has passed ISO 9001. Since 2005, we have successfully produced a full series of high-quality reptile UV lamp, reptile heating bulb, lighting fixture and other reptile accessories. The company has strong R & D team, full production lines, strict quality control system and excellent service team and has established its own brand "Lucky Herp", while providing ODM/OEM services.

Guarantee the high quality of the products, constantly improve the innovative service and build a leading brand of international reptile light with the superior quality, realize the long-term cooperation and win-win relations together with customers is our goal.



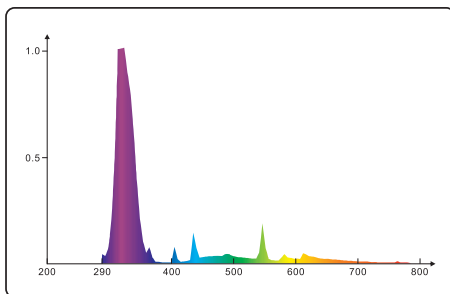
Parts of test



T5 TERRARIUM LAMP

- A full spectrum fluorescent lamp designed to simulate, as closely as possible, the spectrum of natural sunlight.
- High light output of UVA and UVB to support the synthesis of vitamin D3 in desert reptile species.
- Helps prevent or reverse metabolic bone disease commonly seen in captive reptiles.
- Improves feeding and breeding behavior.
- Produces excellent natural colors and iridescence.

T5 UVB 5.0-(DIAMETER-16mm)



T5-24W-5.0



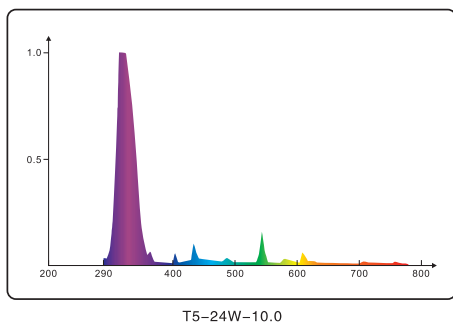
COLOR TEMPERATURE	CRI	AVERAGE LIFE
7000-8000K	80	8000hrs



ITEM NUMBER	WATTAGE	SIZE	DISTANCE		UVB Without reflector (uW/cm ²)	UVB with reflector (uW/cm ²)		UVI Without reflector	UVI with reflector	
			(inch)	(cm)		low output position	high output position		low output position	high output position
JX-FL5T0805	8W	302mm/12in	4	10	90	235	393	3	8.3	Not safe
			12	30	20	67	73	0.7	2.5	2.7
JX-FL5T2405	24W	563mm/22in	4	10	137	332	346	4.5	Not safe	Not safe
			12	30	47	109	122	1.5	3.4	3.7
JX-FL5T3905	39W	863mm/34in	4	10	127	267	285	4.1	7.8	8.3
			12	30	53	90	101	1.6	2.8	3.1
JX-FL5T5405	54W	1163mm/46in	4	10	142	255	285	4	7	7.7
			12	30	61	123	148	1.6	3.4	4.1



T5 UVB 10.0-(DIAMETER-16mm)



COLOR TEMPERATURE	CRI	AVERAGE LIFE
7000-8000K	80	8000hrs



ITEM NUMBER	WATTAGE	SIZE	DISTANCE		UVB Without reflector (uW/cm ²)	UVB with reflector (uW/cm ²)		UVI Without reflector	UVI with reflector	
			(inch)	(cm)		low output position	high output position		low output position	high output position
JX-FL5T0810	8W	302mm/12in	4	10	189	552	645	5.2	Not safe	Not safe
			12	30	43	150	161	1.2	4.2	4.4
JX-FL5T2410	24W	563mm/22in	4	10	257	601	712	7	Not safe	Not safe
			12	30	87	197	239	2.3	5.1	5.9
JX-FL5T3910	39W	863mm/34in	4	10	282	527	596	7.8	Not safe	Not safe
			12	30	113	165	208	3	4.3	5.4
JX-FL5T5410	54W	1163mm/46in	4	10	311	609	668	8.3	Not safe	Not safe
			12	30	136	280	328	3.5	7.1	8.9

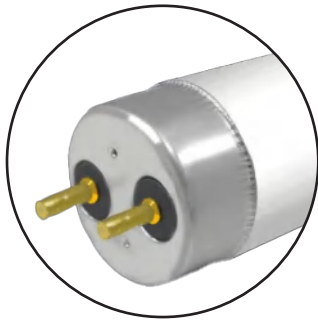
PACKAGE SIZE

WATTAGE	PACKAGE SIZE	GW(kgs)
8W	100PCS/31X32X32CM	6
24W	60PCS/57X32X20CM	6
39W	60PCS/88X32X20CM	9
54W	60PCS/118X32X20CM	11





T8 TERRARIUM LAMP



DIAMETER-25.4mm



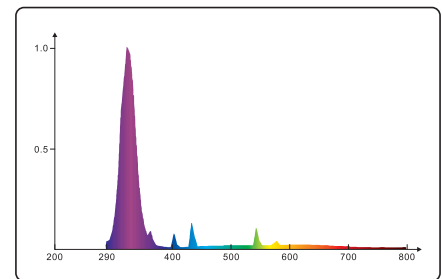
T8 UVB 5.0 TROPICAL TERRARIUM LAMP

- A full spectrum fluorescent lamp designed to simulate, as closely as possible, the spectrum of natural sunlight.
- High light output of UVA and UVB to support the synthesis of vitamin D3 in forest reptile species.
- Helps prevent or reverse metabolic bone disease commonly seen in captive reptiles.
- Improves feeding and breeding behavior.
- Produces excellent natural colors and iridescence.



ITEM NUMBER	WATTAGE	SIZE	DISTANCE		UVB Without reflector ($\mu\text{W}/\text{cm}^2$)	UVI Without reflector
			(inch)	(cm)		
JX-FL8T1405	14W	375mm/15in	4	10	82	2.8
			12	30	23	0.7
JX-FL8T1505	15W	451mm/18in	4	10	85	4.2
			12	30	32	1.3
JX-FL8T1805	18W	604mm/24in	4	10	91	2
			12	30	34	0.8
JX-FL8T2505	25W	755mm/30in	4	10	90	3.2
			12	30	38	1.1
JX-FL8T3005	30W	908mm/36in	4	10	92	3.5
			12	30	42	1.2
JX-FL8T3605	36W	1214mm/48in	4	10	92	2.9
			12	30	44	1.4

COLOR TEMPERATURE	CRI	AVERAGE LIFE
6000-7000K	80	8000hrs



T8-18W-5.0

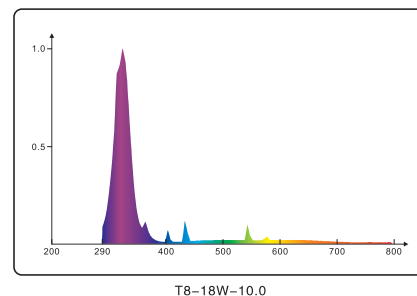
T8 UVB 10.0 DESERT TERRARIUM LAMP

- A full spectrum fluorescent lamp designed to simulate, as closely as possible, the spectrum of natural sunlight.
- High light output of UVA and UVB to support the synthesis of vitamin D3 in desert reptile species.
- Helps prevent or reverse metabolic bone disease commonly seen in captive reptiles.
- Improves feeding and breeding behavior.
- Produces excellent natural colors and iridescence.



ITEM NUMBER	WATTAGE	SIZE	DISTANCE		UVB Without reflector ($\mu\text{W}/\text{cm}^2$)	UVI Without reflector
			(inch)	(cm)		
JX-FL8T1410	14W	375mm/15in	4	10	115	3.8
			12	30	32	1.2
JX-FL8T1510	15W	451mm/18in	4	10	128	5.6
			12	30	43	1.9
JX-FL8T1810	18W	604mm/24in	4	10	123	5.3
			12	30	45	1.7
JX-FL8T2510	25W	755mm/30in	4	10	125	4.5
			12	30	45	1.8
JX-FL8T3010	30W	908mm/36in	4	10	124	4.2
			12	30	52	1.7
JX-FL8T3610	36W	1214mm/48in	4	10	154	4.3
			12	30	73	2

COLOR TEMPERATURE	CRI	AVERAGE LIFE
6000-7000K	80	8000hrs



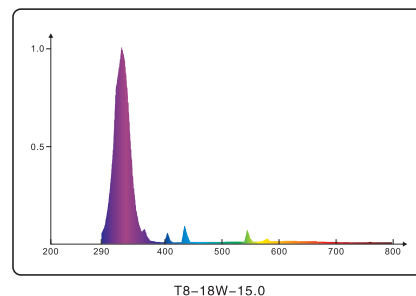
T8 UVB15.0 HIGH OUTPUT TERRARIUM LAMP

- A full spectrum fluorescent lamp designed to simulate, as closely as possible, the spectrum of natural sunlight.
- High light output of UVA and UVB to support the synthesis of vitamin D3 for reptiles with very high UV requirements.
- Helps prevent or reverse metabolic bone disease commonly seen in captive reptiles.
- Improves feeding and breeding behavior.
- Produces excellent natural colors and iridescence.



ITEM NUMBER	WATTAGE	SIZE	DISTANCE		UVB Without reflector ($\mu\text{W}/\text{cm}^2$)	UVI Without reflector
			(inch)	(cm)		
JX-FL8T1415	14W	375mm/15in	4	10	151	5.9
			12	30	41	1.5
JX-FL8T1515	15W	451mm/18in	4	10	200	5.2
			12	30	59	1.8
JX-FL8T1815	18W	604mm/24in	4	10	205	5.3
			12	30	73	1.9
JX-FL8T2515	25W	755mm/30in	4	10	148	7.2
			12	30	62	2.9
JX-FL8T3015	30W	908mm/36in	4	10	205	5.6
			12	30	89	2.4
JX-FL8T3615	36W	1214mm/48in	4	10	189	5.2
			12	30	89	2.4

COLOR TEMPERATURE	CRI	AVERAGE LIFE
6000-7000K	80	8000hrs

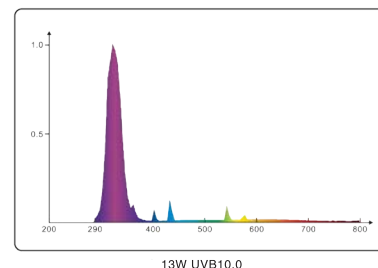


PACKAGE SIZE

WATTAGE	PACKAGE SIZE	GW(kgs)
14W	72PCS/51X42X26CM	10
15W	60PCS/48X45X26CM	8.5
18W	60PCS/63X44X28CM	11
25W	32PCS/78X35X19.5CM	7.5
30W	32PCS/93.5X35X19.5CM	8.5
36W	32PCS/124X35.5X19.5CM	12



COMPACT FLUORESCENT LAMP



UVB 5.0

Tropical and sub-tropical reptiles



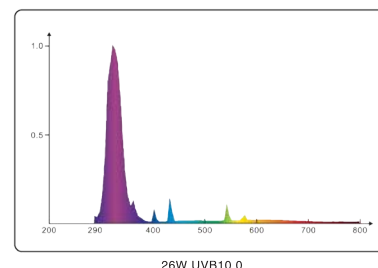
UVB 10.0

Desert dwelling reptiles



UVB 15.0

High UV requirements reptiles



T3 13W-(TUBE DIAMETER-10mm)



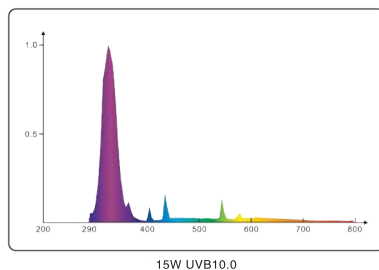
ITEM NUMBER	TYPE	Distance		UVB (uW/cm ²) No reflector	UVI No reflector	Color Temperature	CRI	Average Life
JX-10CFL1305	UVB 5.0	4	10	106	3.5	7000K	85	8000hrs
		12	30	16	0.5	7000K	85	8000hrs
JX-10CFL1310	UVB 10.0	4	10	160	6.3	7000K	85	8000hrs
		12	30	21	0.7	7000K	85	8000hrs
JX-10CFL1315	UVB 15.0	4	10	215	7.8	7000K	85	8000hrs
		12	30	32	1.1	7000K	85	8000hrs

T3 26W-(TUBE DIAMETER-10mm)

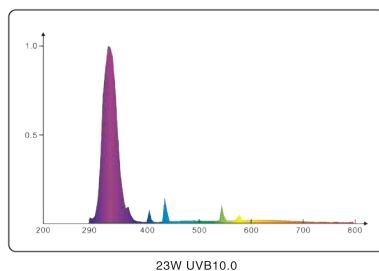


ITEM NUMBER	TYPE	Distance		UVB (uW/cm ²) No reflector	UVI No reflector	Color Temperature	CRI	Average Life
JX-10CFL2605	UVB 5.0	4	10	125	5.3	7000K	85	8000hrs
		12	30	18	0.6	7000K	85	8000hrs
JX-10CFL2610	UVB 10.0	4	10	220	8.2	7000K	85	8000hrs
		12	30	34	1.2	7000K	85	8000hrs
JX-10CFL2615	UVB 15.0	4	10	315	Not safe	7000K	85	8000hrs
		12	30	52	1.7	7000K	85	8000hrs

- High light output of UVA and UVB for the synthesis of Vitamin D3.
- 30% UVA.
- Full spectrum, excellent color rendition.
- No ballast needed.
- Not dimmable.



WATTAGE	PACKAGE SIZE	GW(kgs)
13W	60PCS/40X35X32CM	6
26W	60PCS/47X39X33CM	8.5
15W	60PCS/47X42X32CM	7.5
23W	60PCS/47X42X36CM	9.5



UVB 5.0

Tropical and sub-tropical reptiles



UVB 10.0

Desert dwelling reptiles

T4 15W-(TUBE DIAMETER-12mm)



ITEM NUMBER	TYPE	Distance		UVB (uW/cm ²) No reflector	UVI No reflector	Color Temperature	CRI	Average Life
JX-12CFL1505	UVB 5.0	4	10	105	3.5	7000K	85	8000hrs
		12	30	16	0.5	7000K	85	8000hrs
JX-12CFL1510	UVB 10.0	4	10	195	6.7	7000K	85	8000hrs
		12	30	32	0.9	7000K	85	8000hrs

T4 23W-(TUBE DIAMETER-12mm)



ITEM NUMBER	TYPE	Distance		UVB (uW/cm ²) No reflector	UVI No reflector	Color Temperature	CRI	Average Life
JX-12CFL2305	UVB 5.0	4	10	166	3.8	7000K	85	8000hrs
		12	30	17	0.6	7000K	85	8000hrs
JX-12CFL2310	UVB 10.0	4	10	230	7.5	7000K	85	8000hrs
		12	30	35	1.2	7000K	85	8000hrs

NANO COMPACT FLUORESCENT LAMP

- Optimal levels of UVA & UVB.
- High vitamin D3 conversion.
- Provides necessary UVB rays for optimal calcium metabolism, helps prevent metabolic bone disease.
- No ballast needed.

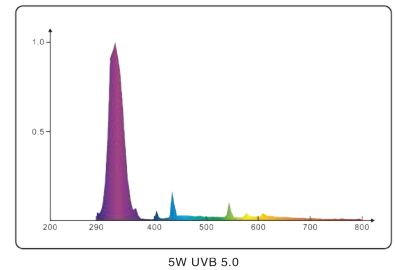


5W



9W

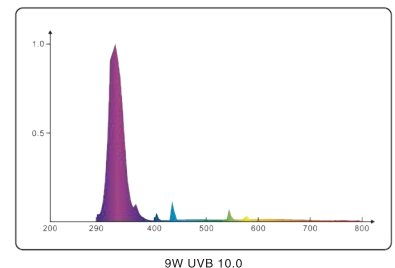
T2 5W-(TUBE DIAMETER-7mm)



PACKAGE SIZE	GW(kgs)
120PCS/45X38X49CM	11

ITEM NUMBER	TYPE	DISTANCE		UVB ($\mu\text{W}/\text{cm}^2$) No reflector	UVI No reflector	COLOR TEMPERATURE	CRI	AVERAGE LIFE
JX-CFL5	UVB 5.0	4	10	105	3.7	7000K	85	8000hrs
		12	30	16	0.5	7000K	85	8000hrs

T2 9W-(TUBE DIAMETER-7mm)

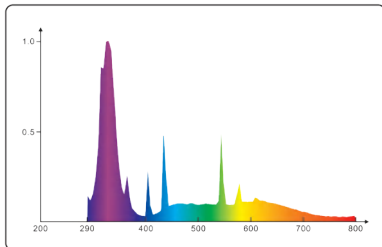


PACKAGE SIZE	GW(kgs)
120PCS/45X38X49CM	11.5

ITEM NUMBER	TYPE	DISTANCE		UVB ($\mu\text{W}/\text{cm}^2$) No reflector	UVI No reflector	COLOR TEMPERATURE	CRI	AVERAGE LIFE
JX-CFL9	UVB 10.0	4	10	185	6.8	7000K	85	8000hrs
		12	30	28	1	7000K	85	8000hrs

BIRD LAMP

Compact Fluorescent lamp

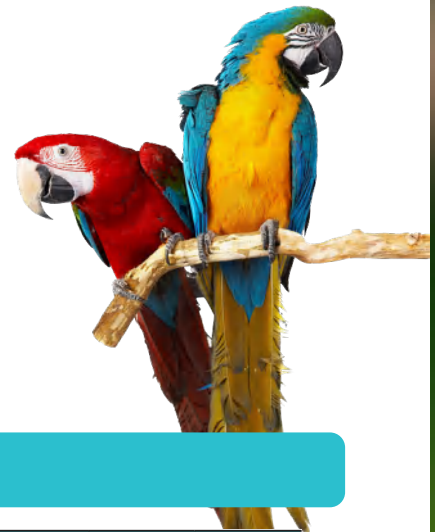


- UVB helps for the natural production of vitamin D3.
- Increases feather condition, helps to reduce feather plucking and aids in mate selection and reproduction.
- Activates color vision.
- Improves Health.

3U BIRD LAMP

TYPE	WATTAGE	VOLTAGE	BASE	COLOR TEMPERATURE	CRI	AVERAGE LIFE
JX-BCFLU20	20W	120V	E26	6000K	90	8000hrs
	20W	220-240V	E27	6000K	90	8000hrs

TYPE	PACKAGE SIZE	GW(kgs)
JX-BCFLU20	60PCS/35X29X39CM	8



SPIRAL BIRD LAMP

TYPE	WATTAGE	VOLTAGE	BASE	COLOR TEMPERATURE	CRI	AVERAGE LIFE
JX-BCFLS20	20W	120V	E26	6000K	90	8000hrs
	20W	220-240V	E27	6000K	90	8000hrs

TYPE	PACKAGE SIZE	GW(kgs)
JX-BCFLS20	60PCS/47X42X36CM	8.5



HEATING LAMP

Solar basking is paramount for ensuring the optimal health and behavior of reptiles. These lamps facilitate thermoregulation, a critical physiological process for reptiles as they rely on external heat sources to regulate their internal temperature, ensuring metabolic efficiency. A directed heat source stimulates natural behaviors: seeking warmth and basking. These lamps are instrumental in creating heat gradients in the terrarium. This spatial temperature variance enables reptiles to move between zones of varying warmth, promoting both physical activity and the choice of preferred thermal niches.



Solar Basking Lamp



Intense Solar Basking Spot Lamp



Solar Basking Infrared



Solar Basking Night



R45 Mini Solar Basking Lamp



Neodymium Daylight Lamp

REPTILE HEATING BULB SAFETY & INNOVATION

NEW

New upgrade solar basking lamp (2nd Gen, Shatterproof)



Standard heating bulbs use tungsten filaments to provide essential warmth, but carry risks of breakage from uneven thermal stress and potential burn hazards.

Shatterproof Safety Design:

- 400°C-rated thermal-resistant polymer layer bonds glass fragments
- Maintains structural integrity even if damaged
- Allows safe bulb replacement via controlled shutdown protocol
- Eliminates loose shard hazards for complete pet protection



- ✓ Industry-leading 400°C adhesive technology
- ✓ Zero loose glass particle risks
- ✓ 30% enhanced durability vs standard bulbs

New upgrade infrared lamp (2nd Gen, Burst-proof)

- Quartz glass interior with inert gas & vacuum heat conduction technology ensures double protection, eliminating bulb bursting risks. Solves fragility and detachment issues of traditional bulbs.
- Compact halogen design delivers high power output and rapid uniform heating. Red lamp housing gently diffuses warmth, preventing localized overheating while meeting reptile habitat needs.
- Tungsten filaments protected by inert gas extend lifespan beyond standard bulbs.
- Quartz inner layer + red protective shell enable balanced heat dispersion. 360° thermal simulation replicates natural warmth, ensuring pet safety.



- ✓ Burst-proof dual-tech construction
- ✓ Uniform heating without hot spots

ITEM NUMBER	WATTAGE	SIZE	PACKAGE SIZE	GW(kgs)
JX-SPBKL50R63	50W	63mm	80PCS/56X35X24CM	6.5
JX-SPBKL75R80	75W	80mm	60PCS/52X43X24CM	6.5
JX-SPBKL100R80	100W	80mm	60PCS/52X43X24CM	6.5
JX-BPRBKL50R63	50W	63mm	80PCS/56X35X24CM	6.5
JX-BPRBKL75R80	75W	80mm	60PCS/52X43X24CM	6.5
JX-BPRBKL100R80	100W	80mm	60PCS/52X43X24CM	6.5



SOLAR BASKING LAMP



- Provides an ambient heat to an enclosure as a wide flood source.
- Includes UVA to aid well-being and color vision.
- Increases ambient temperatures.
- Warm color output.

ITEM NUMBER	WATTAGE	SIZE	PACKAGE SIZE	GW(kgs)
JX-BKL25R63	25W	R63	80PCS/56X35X24CM	6.5
JX-BKL50R63	50W	R63	80PCS/56X35X24CM	6.5
JX-BKL75R80	75W	R80	60PCS/52X43X24CM	6.5
JX-BKL100R80	100W	R80	60PCS/52X43X24CM	6.5
JX-BKL150R95	150W	BR95	40PCS/50.5X40X28.5CM	6

INTENSE SOLAR BASKING SPOT LAMP



- Provides a tight focused beam that will allow for intense heat provision.
- Includes UVA to aid well-being and color vision.
- Increases ambient temperatures and has a focused beam for intense basking.
- Warm color output.

ITEM NUMBER	WATTAGE	SIZE	PACKAGE SIZE	GW(kgs)
JX-IBKL25R63	25W	DR63	80PCS/56X35X24CM	6.5
JX-IBKL50R63	50W	DR63	80PCS/56X35X24CM	6.5
JX-IBKL75R80	75W	DR80	60PCS/52X43X24CM	6.5
JX-IBKL100R80	100W	DR80	60PCS/52X43X24CM	6.5
JX-IBKL150R95	150W	DR95	40PCS/50.5X40X28.5CM	6

SOLAR BASKING INFRARED



- Ideal for heating a vivarium during the day and evening.
- A great source of heat for Ectothermic species.
- Low visible light, high heat.
- Emits no UV-B or UV-A, just Infrared.

ITEM NUMBER	WATTAGE	SIZE	PACKAGE SIZE	GW(kgs)
JX-RBKL25R63	25W	R63	80PCS/56X35X24CM	6.5
JX-RBKL50R63	50W	R63	80PCS/56X35X24CM	6.5
JX-RBKL75R80	75W	R80	60PCS/52X43X24CM	6.5
JX-RBKL100R80	100W	R80	60PCS/52X43X24CM	6.5
JX-RBKL150R95	150W	R95	40PCS/50.5X40X28.5CM	6

SOLAR BASKING NIGHT



- Provides ambient heat that creates a healthy environment for reptiles.
- Simulates natural moonlight.
- Perfect for nocturnal viewing of your terrarium.

ITEM NUMBER	WATTAGE	SIZE	PACKAGE SIZE	GW(kgs)
JX-NBKL25	25W	A19	80PCS/56X35X24CM	6.3
JX-NBKL50	50W	A19	80PCS/56X35X24CM	6.3
JX-NBKL75	75W	A19	80PCS/56X35X24CM	6.3

R45 MINI SOLAR BASKING LAMP



- Ideal for reptiles that thermo-regulate by basking, including many tropical and desert species.
- Small daytime(white) and nighttime(red) heat lamp for nano-size terrariums.
- Ideal for small geckos, hatchling reptiles, amphibians, or invertebrates (arachnids or tarantulas).

ITEM NUMBER	WATTAGE	SIZE	PACKAGE SIZE	GW(kgs)
JX-MBKL25R45	25W	45mm	200PCS/53X28X27CM	7
JX-MBKL40R45	40W	45mm	200PCS/53X28X27CM	7
JX-MRBKL25R45	25W	45mm	200PCS/53X28X27CM	7
JX-MRBKL40R45	40W	45mm	200PCS/53X28X27CM	7

NEODYMIUM DAYLIGHT LAMP



- Neodymium gas provides a natural color spectrum
- Increases overall indoor temperature of the terrarium
- Contains UVA radiation, supports natural physiological processes
- Supports the reproduction and mutual attraction of animals
- Ideal spectrum for plant photosynthesis

ITEM NUMBER	WATTAGE	SIZE	PACKAGE SIZE	GW(kgs)
JX-MBKL25A19	25W	A19	80PCS/56X35X24CM	6.5
JX-MBKL50A19	50W	A19	80PCS/56X35X24CM	6.5
JX-MBKL75A19	75W	A19	80PCS/56X35X24CM	6.5
JX-MBKL100A19	100W	A19	80PCS/56X35X24CM	6.5

CERAMIC HEATING LAMP

CERAMIC HEATING LAMP



- Ideal for creating necessary warm areas in the terrarium.
- Supports digestion, promotes well-being and activity.
- Suitable as a constant heat source in terrariums.
- Emits heat only. Does not emit visible light.
- Enables night observation of the animals without disrupting the 24 hour cycle.
- Only use heat emitter in a suitable ceramic lamp holder.

ITEM NUMBER	WATTAGE	SIZE	PACKAGE SIZE	GW(kgs)
JX-CHL50	50W	75mm	60PCS/44x36x38CM	13
JX-CHL75	75W	75mm	60PCS/44x36x38CM	
JX-CHL100	100W	75mm	60PCS/44x36x38CM	
JX-CHL150	150W	75mm	60PCS/44x36x38CM	



HALOGEN HEATING LAMP

HALOGEN HEATING LAMP



- Bright, naturalistic heat lamp for nano-size terrariums.
- UVA / UVB simulate sunlight, full-spectrum irradiation, provide daily ultraviolet intake for reptiles.
- Stimulate appetite, accelerate vitamin synthesis, help calcium absorption and promote growth.
- Ideal for small geckos, hatchling reptiles, amphibians or invertebrates (arachnids or tarantulas).

ITEM NUMBER	WATTAGE	SIZE	PACKAGE SIZE	GW(kgs)
JX-HL25	25W	HR16	200PCS/53X28X27CM	11
JX-HL35	35W	HR16	200PCS/53X28X27CM	
JX-HL50	50W	HR16	200PCS/53X28X27CM	



CERAMIC HEATING LAMP HOLDER



Has heat resistance and safety. The flexible tube is sturdy and durable, can rotate 360° without deformation, and the lamp clip is firmly fixed on the tortoise tank of the glass container.

The temperature of the heating lamp can be adjusted according to your needs to meet the needs of reptiles at different times.

ITEM NUMBER	WATTAGE	PACKAGE SIZE	GW(kgs)
JX-HLH01	MAX 100W	36PCS/56X38X46CM	20

REPTILE FULL SPECTRUM SOLAR LAMP

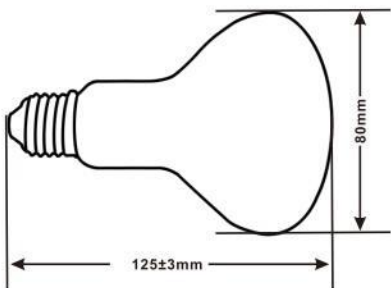
- UV Mercury Vapor bulb -



- Simulates beneficial UV rays from the sun. Provides a source of growth power for calcium synthesis and bone deposition.
- Optimal levels of UVB, UVA, visual light and heat in one bulb.
- Gathering heat output by increasing reflective coating.
- Increased UVB penetration distance (+30 cm / 12").
- No external ballast required.



R80 80W



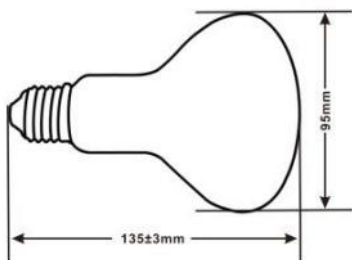
CLEAR



COATED

ITEM NUMBER	TYPE	WATTAGE	VOLTAGE	BASE	DISTANCE		UVB (uW/cm²)	AVERAGE LIFE	PACKAGE SIZE	GW(kgs)
					(inch)	(cm)				
JX-SL80R80CL	CLEAR	80W	120V	E26	12	30	250	5000hrs	24PCS/45X35X34CM	5
			220-240V	E27	12	30	250	5000hrs	24PCS/45X35X34CM	
JX-SL80R80CO	COATED		120V	E26	12	30	50	5000hrs	24PCS/45X35X34CM	
			220-240V	E27	12	30	50	5000hrs	24PCS/45X35X34CM	

R95 80W



CLEAR



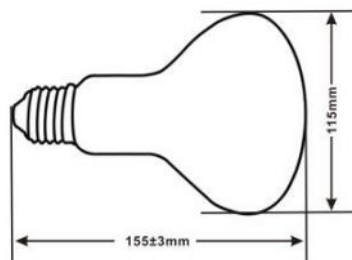
COATED



FROSTED

ITEM NUMBER	TYPE	WATTAGE	VOLTAGE	BASE	DISTANCE		UVB (uW/cm ²)	AVERAGE LIFE	PACKAGE SIZE	GW(kgs)
					(inch)	(cm)				
JX-SL80R95CL	CLEAR	80W	120V	E26	12	30	300	5000hrs	24PCS/52X39X34CM	5.5
			220-240V	E27	12	30	300	5000hrs	24PCS/52X39X34CM	
JX-SL80R95CO	COATED		120V	E26	12	30	60	5000hrs	24PCS/52X39X34CM	
			220-240V	E27	12	30	60	5000hrs	24PCS/52X39X34CM	
JX-SL80R95FR	FROSTED		120V	E26	12	30	50	5000hrs	24PCS/52X39X34CM	
			220-240V	E27	12	30	50	5000hrs	24PCS/52X39X34CM	

R115 125W



CLEAR



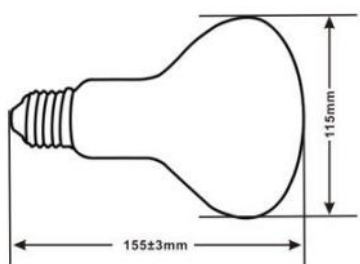
COATED



FROSTED

ITEM NUMBER	TYPE	WATTAGE	VOLTAGE	BASE	DISTANCE		UVB (uW/cm ²)	AVERAGE LIFE	PACKAGE SIZE	GW(kgs)
					(inch)	(cm)				
JX-SL125R115CL	CLEAR	125W	120V	E26	12	30	1500	5000hrs	24PCS/60X44X39CM	6.5
			220-240V	E27	12	30	1500	5000hrs	24PCS/60X44X39CM	
JX-SL125R115CO	COATED		120V	E26	12	30	200	5000hrs	24PCS/60X44X39CM	
			220-240V	E27	12	30	200	5000hrs	24PCS/60X44X39CM	
JX-SL125R115FR	FROSTED		120V	E26	12	30	200	5000hrs	24PCS/60X44X39CM	
			220-240V	E27	12	30	200	5000hrs	24PCS/60X44X39CM	

R115 160W



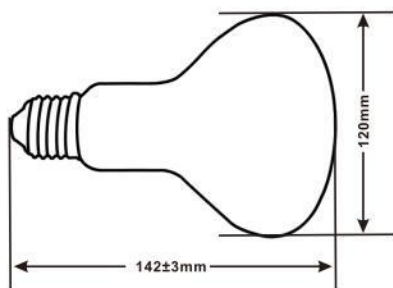
CLEAR

COATED

FROSTED

ITEM NUMBER	TYPE	Wattage	Voltage	Base	DISTANCE		UVB ($\mu\text{W}/\text{cm}^2$)	Average Life	PACKAGE SIZE	GW(kgs)
					(inch)	(cm)				
JX-SL160R115CL	CLEAR	160W	120V	E26	12	30	1800	5000hrs	24PCS/60X44X39CM	6.5
			220-240V	E27	12	30	1800	5000hrs	24PCS/60X44X39CM	
JX-SL160R115CO	COATED		120V	E26	12	30	300	5000hrs	24PCS/60X44X39CM	
			220-240V	E27	12	30	300	5000hrs	24PCS/60X44X39CM	
JX-SL160R115FR	FROSTED		120V	E26	12	30	300	5000hrs	24PCS/60X44X39CM	
			220-240V	E27	12	30	300	5000hrs	24PCS/60X44X39CM	

Par 38 100W/160W



CLEAR

COATED

ITEM NUMBER	TYPE	Wattage	Voltage	Base	DISTANCE		UVB ($\mu\text{W}/\text{cm}^2$)	Average Life	PACKAGE SIZE	GW(kgs)
					(inch)	(cm)				
JX-SL100PAR38CL	CLEAR	100W	120V	E26	12	30	1000	5000hrs	24PCS/60X44X39CM	8.5
			220-240V	E27	12	30	1000	5000hrs	24PCS/60X44X39CM	
JX-SL100PAR38CO	COATED		120V	E26	12	30	80	5000hrs	24PCS/60X44X39CM	
			220-240V	E27	12	30	80	5000hrs	24PCS/60X44X39CM	
JX-SL160PAR38CL	CLEAR	160W	120V	E26	12	30	1800	5000hrs	24PCS/60X44X39CM	
			220-240V	E27	12	30	1800	5000hrs	24PCS/60X44X39CM	
JX-SL160PAR38CO	COATED		120V	E26	12	30	150	5000hrs	24PCS/60X44X39CM	
			220-240V	E27	12	30	150	5000hrs	24PCS/60X44X39CM	

LIGHTING FIXTURE

HO T5 UV-B LIGHTING FIXTURE

- Choice of UV-B T5 lamp.
- Easy to fit inside vivariums or over mesh.
- Quality wide-frequency electronic ballast, flicker free (T5).
- Simple and stylish design with built in reflector.
- Fireproof PP material to make it durable and safe.
- In-line on/off switch.



ITEM NUMBER	WATTAGE	SIZE		PACKAGE SIZE	GW(kgs)
JX-FL5T08F	8W	315x95x55mm	1ft	30PCS/60.5X37X51CM	21
JX-FL5T24F	24W	575x95x55mm	2ft	18PCS/62X37X50.5CM	19
JX-FL5T39F	39W	875x95x55mm	3ft	15PCS/92X37X42.5CM	21
JX-FL5T54F	54W	1175x95x55mm	4ft	9PCS/123X37.5X27CM	16

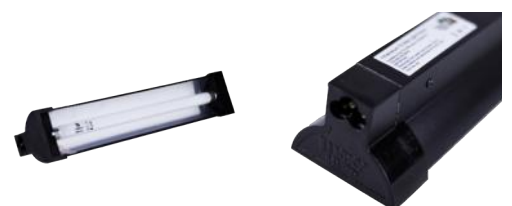


NEW 2nd Gen UV-B HO T5 MINI FIXTURE

- Compact, lightweight design for seamless integration into tight vivarium spaces or over mesh.
- Premium flicker-free electronic ballast with built-in reflector.
- Sleek modern aesthetics paired with fireproof PP housing for durability and safety.
- In-line on/off switch for effortless control.



ITEM NUMBER	WATTAGE	SIZE		PACKAGE SIZE	GW(kgs)
JX-MFL5T08F	8W	330x62x50mm	1ft	35PCS/51.5X35.5X40.5CM	20
JX-MFL5T24F	24W	592x62x50mm	2ft	25PCS/51.5X41.5X30CM	20
JX-MFL5T39F	39W	890x62x50mm	3ft	20PCS/91.5X51.5X24CM	21
JX-MFL5T54F	54W	1192x62x50mm	4ft	16PCS/122X41.5X24CM	20



HO T8 UV-B LIGHTING FIXTURE

- Choice of UV-B T8 lamp.
- Easy to fit inside vivariums or over mesh.
- Quality wide-frequency electronic ballast, flicker free (T8).
- Simple and stylish design with built in reflector.
- Fireproof PP material to make it durable and safe.
- In-line on/off switch.



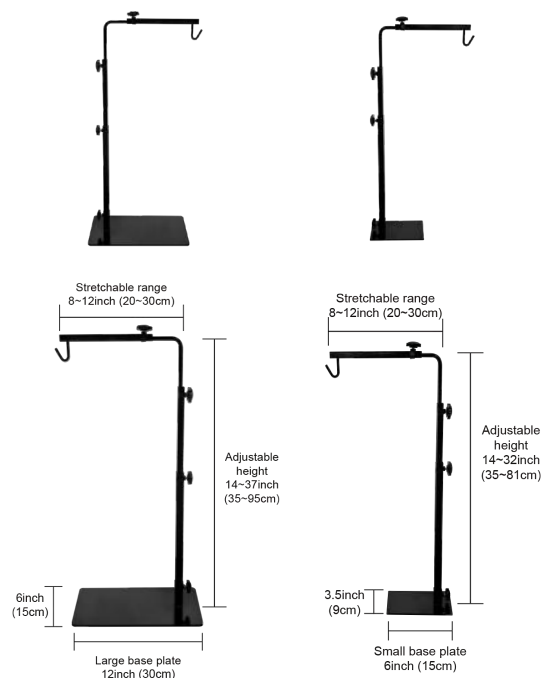
ITEM NUMBER	WATTAGE	SIZE	PACKAGE SIZE	GW(kgs)
JX-FL8T15F	15W	486x120x80mm	18PCS/52.5X39X51CM	20



LAMP STAND

- Modular corrosion-proof steel alloy frame enables independent height/angle customization.
- Tool-less assembly integrates cable channels and windproof base for tidy vibration-free setups.
- Lab-engineered thermal-precise lighting for amphibian/reptile vivariums.
- Reinforced humidity-resistant hooks ensure lasting performance.

ITEM NUMBER	SIZE	PACKAGE SIZE	GW(kgs)
JX-LSS	W:8-12",H:14-32"	15PCS/58.5x41.5x34.5CM	16
JX-LSL	W:8-12",H:14-37"	9PCS/58.5x41.5x30.5CM	20



REFLECTING DOME

- Stylish matte black finish.
- Heavy gauge, highly reflective aluminum dome.
- Multi directional clamp fitting.
- Supplied with hook for use with stands.
- Heat resistant ceramic fitting.
- In-line on/off switch.



JX-LD5.5N



JX-LD5.5D



JX-LD8.5W



JX-LD8.5N

ITEM NUMBER	WATTAGE	SIZE	PACKAGE SIZE	GW(kgs)
JX-LD5.5N	100W	5.5" Normal	36PCS/46X47X57CM	16
JX-LD5.5D	100W	5.5" Deep	36PCS/46X47X57CM	16
JX-LD8.5W	250W	8.5" Wave	20PCS/48.5X48.5X51CM	11
JX-LD8.5N	250W	8.5" Normal	20PCS/48.5X48.5X54CM	12



DUAL DOME

- Increase the light, heat and UVB/UVA output.
- Two domes in one for maximum convenience.
- Dual ceramic socket for use lamps up to 150w(M) or 200w(L).
- Individual power switch in line.
- The ventilation holes on the top helps good heat dissipation effect.



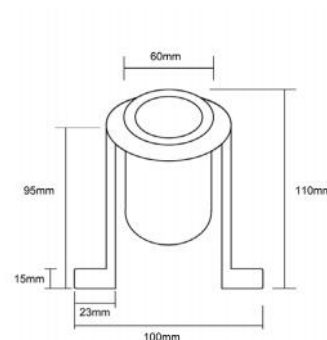
ITEM NUMBER	WATTAGE	SIZE	PACKAGE SIZE	GW(kgs)
JX-LDDM	150W	Medium	12PCS/59.5X46.5X46CM	14
JX-LDDL	200W	Large	8PCS/59.5X31.5X52CM	11



CERAMIC LAMP HOLDER

The Reptile Ceramic Lamp Holder with Bracket is an easy to use and very versatile lamp holder. Made of quality components and can be used with most heat sources up to 300W.

- Secure fixture for mounting reptile lamps.
- Easy to fit, space saving, versatile design.
- In-line on/off switch.



ITEM NUMBER	WATTAGE	FITTING	PACKAGE SIZE	GW(kgs)
JX-CLHB300	300W	E26/E27	(US/EU) 60PCS/49.5X41.5X38CM	21
			(UK) 50PCS/41.5X41.5X38CM	20
JX-CLH300	300W	E26/E27	60PCS/45X38X38CM	17.5

REFLECTING DOME WITH THERMOSTAT

- Precise temperature control ensures optimal habitat conditions for reptiles.
- Energy-efficient design with automated adjustments reduces manual monitoring.
- Enhanced safety features prevent overheating and ensure pet comfort.
- A temperature-regulating lampshade helps prolong the light bulb's service life.

ITEM NUMBER	WATTAGE	SIZE	PACKAGE SIZE	GW(kgs)
JX-LDWT5.5N	100W	5.5" Normal	27PCS/46.5X46.5X52.5CM	14.5
JX-LDWT5.5D	100W	5.5" Deep	27PCS/46.5X46.5X52.5CM	14.5
JX-LDWT8.5W	250W	8.5" Wave	16PCS/49.5X49.5X46CM	10.5
JX-LDWT8.5N	250W	8.5" Normal	16PCS/49.5X49.5X49CM	11



THERMOSTAT

- This product is a constant temperature control switch that can adjust the temperature freely.
- It adopts a constant temperature PID heating mode, uses high toughness fireproof retardant materials, and has high safety performance.
- Can be used for reptiles, small pets, or horticultural cultivation. The maximum output load is 300W.



ITEM NUMBER	WATTAGE	PACKAGE SIZE	GW(kgs)
JX-TAT300	300W	(US) 60PCS/47X40X38CM	20
		(EU) 84PCS/54X47X38CM	20

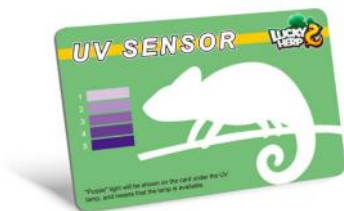
LED UVB



- Optimal levels of UVA & UVB.
- Provides necessary UVB rays for optimal calcium metabolism and High vitamin D3 conversion.
- UVA rays stimulate appetite, activity, and reproductive behavior.
- Prevents metabolic bone disease.
- Highly energy efficient UVB LED Spot.
- Focused light beam for stronger UV penetration.

ITEM NUMBER	WATTAGE	UVB	SIZE	PACKAGE SIZE	GW(kgs)
JX-LED03	3W	UVB5.0	PAR20	168PCS/52X45X42CM	18.5
JX-LED05	5W	UVB10.0	PAR20	168PCS/52X45X42CM	18.5
JX-LED10	10W	UVB10.0	PAR30	40PCS/63X51X32CM	15

UV SENSOR



- This reusable card can measure ultraviolet(UV) radiation accurately in 10 seconds. Hold the card under the UV lamp at the basking site (within 5cm distance to the lamp) to check if the lamp is available or not.
- "Purple" light will be shown on the card under the UV lamp, and means that the lamp is available.

ITEM NUMBER	PACKAGE SIZE	GW(kgs)
JX-UVS	200PCS	3

HEATING PAD

PVC HEATING PAD

- Suitable for various reptiles.
- Even heating, quick temperature rise, provides a warm environment for reptiles.
- High-toughness PVC packaging material, can be rolled without deformation, and has good insulation.



ITEM NUMBER	WATTAGE	SIZE	PACKAGE SIZE	GW(kgs)
JX-PVCH0402	4W	178*100mm(7*4inch)	40PCS 46.5X37.5X48CM	11
JX-PVCH0802	8W	200*150mm(8*6inch)		11.8
JX-PVCH1602	16W	300*200mm(12*8inch)		15.5
JX-PVCH2402	24W	450*200mm(18*8inch)		18.5
JX-PVCHA0402	4W	178*100mm(7*4inch)		11
JX-PVCHA0802	8W	200*150mm(8*6inch)		11.8
JX-PVCHA1602	16W	300*200mm(12*8inch)		15.5
JX-PVCHA2402	24W	450*200mm(18*8inch)		18.5
JX-PVCHT0402	4W	178*100mm(7*4inch)		11
JX-PVCHT0802	8W	200*150mm(8*6inch)		11.8
JX-PVCHT1602	16W	300*200mm(12*8inch)		15.5
JX-PVCHT2402	24W	450*200mm(18*8inch)		18.5



Direct Insertion Heating Pad.

Simply connect the power to use it directly.



Knob Switch Heating Pad.

Control the output power and adjust the temperature through the knob switch.

When the knob switch is turned on, the power can be adjusted from 10% to 100%.



Heating Pad With Thermostat.

Accurately control the temperature through a thermostat.

Temperature measurement range: 20°C -50°C.

The heating pad has a built-in 50°C (±5°C) temperature control chip. When the surface temperature exceeds 50°C(±5°C), the heating pad will be powered off for protection.

PET HEATING PAD

- Safe PET material ensures durability and pet-friendly heating.
- Energy-efficient design maintains consistent warmth for habitats.
- Easy-to-clean surface ideal for reptiles' needs.
- Adjustable knob for precise temperature control.



ITEM NUMBER	WATTAGE	SIZE	PACKAGE SIZE
JX-PETH0502	5W	14*15cm	80PCS/48X34X26CM
JX-PETH0702	7W	15*28cm	80PCS/48X34X26CM
JX-PETH1402	14W	28*28cm	80PCS/47X43X31CM
JX-PETH2002	20W	42*28cm	80PCS/58X51X29CM
JX-PETH2802	28W	53*28cm	80PCS/58X51X29CM
JX-PETH3502	35W	65*28cm	80PCS/84X35X35CM
JX-PETH4502	45W	80*28cm	80PCS/84X35X35CM
JX-NPETH0502	5W	14*15cm	80PCS/48X34X26CM
JX-NPETH0702	7W	15*28cm	80PCS/48X34X26CM
JX-NPETH1402	14W	28*28cm	80PCS/47X43X31CM
JX-NPETH2002	20W	42*28cm	80PCS/58X51X29CM
JX-NPETH2802	28W	53*28cm	80PCS/58X51X29CM
JX-NPETH3502	35W	65*28cm	80PCS/84X35X35CM
JX-NPETH4502	45W	80*28cm	80PCS/84X35X35CM

INFRARED HEATING LAMP

INFRARED HEATING LAMP

- Suitable for a variety of uses including pet insulation, reptile heating, greenhouse lighting, food service and more.
- Waterproof and explosion-proof, heats quickly and with long service life.
- Ruggedly designed for reliability and won't break easily.



ITEM NUMBER	WATTAGE	SIZE	PACKAGE SIZE	GW(kgs)
JX-CKH100P	100W	PAR38	50PCS/58X58X31CM	8
JX-CKH150P	150W	PAR38		
JX-CKH250P	250W	PAR38		
JX-CKH100R	100W	R125	24PCS/60X47X40CM	8.5
JX-CKH150R	150W	R125		
JX-CKH250R	250W	R125		

INFRARED PHYSICAL THERAPY LAMP

- Infrared expected to relieve fatigue, ease the suffering and treat rheumatism.
- Suitable for the health illumination of household, hotel and bathroom, also used in medical treatment, livestock, drying.
- Full spectrum infrared light.
- Provides people and animals with the warmth of the sun.



ITEM NUMBER	WATTAGE	SIZE	PACKAGE SIZE	GW(kgs)
JX-PTL150R125	150W	R125	24PCS/60X44X39CM	7
JX-PTL200R125	200W	R125		
JX-PTL250R125	250W	R125		
JX-PTL275R125	275W	R125		

Notes

[illegible]

Notes

[illegible]



Changzhou Jinxu Special Lighting Technology Co., Ltd.

TEL: +86 519 85613533

E-MAIL: elaine@jx-lighting.com

WEB: www.luckyherpreptile.com

ADDRESS: NO. 47 Yujiatou, Minfeng Village,
Luoyang Town, Wujin, Changzhou, Jiangsu, China.

P.C.: 213104



Scan for catalog